



Media Release

26 March 2009

Enhance the outdoor living experience

The pre-Easter warm spring weather had pool and spa owners looking forward to a long hot summer, in stark contrast to those of the last two years. To maximise the enjoyment of outdoor living, a variety of accessories – from single and double hammocks to unbreakable drinks ware - have been added to the Essentials 2009 range from Golden Coast.

To overcome the need to have china and glass outside, especially with children or around pools and spas where bare feet are the norm, Essentials has a full range of table and drinks ware that meet every requirement, including a cocktail shaker and martini style glasses, to wine, tumbler and beer 'glasses'.

To keep cool there is a nine foot diameter versatile spa-side umbrella, a great alternative to the traditional gazebo. Its 'crank and tilt' operation makes it easy to use, whilst its ability to rotate a full 360° provides total protection from the elements whatever the time of day.

If a pool or spa doesn't have internal lighting, it is still possible to create an amazing underwater show, especially with the 'Light Starship' and its ten different lighting effects and internal rotor that transforms the water into a galaxy of coloured light. A retro-fit solar light that can also be fitted onto the side of the spa provides a warm inviting glow, whilst ensuring safe access at night.

For hot tub owners there's more, the 'coolest' duck and the most versatile and easy to operate spa cover lifters, as well as a nifty step with storage and complementary handrail.

New this year is the entry-level quick and easy to install 'Cover Mate I' cover lifter, which is suitable for spas up to eight feet, yet only requires 10 inches clearance for storage behind the spa. Likewise, the ingenious 'Cover Rock-It', which is secured by a plate slipped under the spa, combines ease of use with affordability. When operated the cover slides effortlessly behind the spa enabling a view from all sides.

Three new spa safety steps colours have been added – light grey, redwood and brown to coordinate with the variety of external spa walls. The new SmartStep features a single 36" wide step making it ideal for partially recessed spas and comes supplied complete with a handy pull out storage drawer.

Complementing the steps and adding safety when entering or leaving a spa is a 'free-mount' handrail that sits under the spa and features a 180° swivel for easy entry and exit, yet locks for increased safety.

More...

To enhance the spa experience, the practical 'SPAroma' range offers a blend of 12 natural hypoallergenic therapeutic fragrances that not only provide a long lasting fragrance but help reduce water maintenance. But it's not all for the adults, children are catered for with a range of water-based games and toys that add fun and enjoyment to the bathing experience.

On the practical side, a full range of water treatment and testing kits, along with cleaning products ensure that a pool or hot tub is kept in tip-top condition throughout the year.

Ends

Attached Pictures



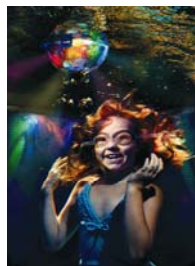
Spa-Side Umbrella



'Cover Mate I' Lifter



Captain Duck



Light 'Starship'

Note to Editors:

Golden Coast has 30 years experience as one of the UK's top distributors of pool and spa equipment. The company maintains a portfolio of products right across the pool and spa spectrum, designed to offer maximum value with high quality. The company is the exclusive UK distributor for Marquis Spas® and the UK's main distributor of Tylö sauna and steam products through its nationwide network of accredited dealers.

Further Information from:

Jamie Adams
 Golden Coast Limited
 Tel: 01271 378100
 Fax: 01271 371699
 Email: swimmer@goldenc.com

Issued By:

Geoff Adam
 Callback Limited
 Tel: 01271 883331
 Email: geoff@callbacknow.co.uk