



Media Release

Product Round Up

Swimmer Polymer speeds construction

Ideal for self-build or professional installation, the 'Swimmer Polymer' liner pool kit system - exclusive to Golden Coast in the UK - can speed the completion of an overall project by up to six weeks.

Manufactured from lightweight non-corrosive polymer, the wall panels are available at a height of either 42 inches or 48 inches to give an overall 34 inch or 40 inch water depth respectively. It is possible to use the panels in conjunction with a 'hopper' designed deep-end, whilst unique pre-engineered curved panels are available to enable a variety of pool shapes to be created.

This latest addition to the Swimmer pool kit family is an innovative concept that utilises the strength and stability of the parabolic arch, as used for centuries in architecture and bridges. By using advanced analysis techniques, it was found that intersecting the parabolic arches would significantly increase stiffness of the panel and strength of the pool.

The buttress design includes construction features that allow the assembly of a strong, stable pool in almost any site conditions. Moulded plumbing line cradles help to ensure level pipework and speed up the installation, whilst a double keyhole fastening system allows for a choice of connection methods, including the unique Speed-Lock system.

The structure is not bolted together but uses non-corrosive pegs and wedges to secure the wall sections, thereby providing integral strength and the ability to achieve a totally level structure. It is possible for a professional team of two to construct the walls of a 6 metre x 13 metre pool in one day.

Whilst traditional tiled concrete pools are still popular, kit pools provide the same flexibility to produce custom design pool shapes but with the benefit of a quicker build-programme. This is particularly true for level-deck pools.

When the two systems are compared, after ground works have been completed and allowing time for each process of the pour and rendering to cure, a tiled concrete pool will need up to 16 weeks from the initial construction of the shell to the final fixing of the tiles. In comparison, the 'Swimmer Polymer' can cut the overall project time to six weeks or less, even during inclement weather or before a building is made weatherproof.

'Sunburst' – the most efficient solar energy system

'Sunburst' - the most efficient solar energy system for heating swimming pools that captures free energy from the sun even on cloudy days, can extend the swimming season with acceptable bathing temperatures, without any other source of heating.

Available from Golden Coast and using the latest evacuated solar tube collector technology, the system is made up of a series of Pyrex glass vacuum tubes within which are closed copper heat pipes. These pipes protrude into a manifold through which the pool water is pumped, heating it as it passes.

The insulating effect of evacuated tube technology, which creates a vacuum around the heat pipe, means that the system is so efficient temperatures of up to 250°C can be reached inside the copper pipe, far more than traditional black solar panels.

Simple to install either as a primary heat source or retro-fitted in conjunction with an existing system, the collectors are ideally placed on a south facing sloping roof to gain maximum exposure to the sun's trajectory but will also work if placed on an east or west facing roof, or a combination of both. Optional frames can be supplied to achieve the correct angle required if the system is to be installed on a flat roof or at ground level.

"The system is most effective on clear, still and warm summer days but will still heat up even on overcast and windy days. If installed in a south-facing position, it is possible to maintain pool water temperature of 28°C from June to September and also to extend the swimming season, with acceptable bathing temperatures, without any other source of heating, being potentially achieved as early as April and as late as October," said Shaun Adams, of Golden Coast.

Multi-Cyclone – a spiralling success for Golden Coast

The Government's interest in water wastage from private swimming pools is becoming a significant issue for owners, which could be eased with one of the most inventive advancements in the industry.

With no moving parts and no filter unit to clean or replace - the 'Multi Cyclone', manufactured by Waterco in Australia and available from Golden Coast, uses centrifugal force to create a vortex effect to separate the pool water and sediment, which is then collected in a special easy-clean container.

On average the annual backwashing of a conventional pool filter system loses 8,500 litres of water, whereas the water waste from the Multi Cyclone unit is only 200 litres a year – a significant saving of 8,300 litres of water. The unit also decreases the need to backwash, whilst filter maintenance is reduced thus extending the life of the main filter unit.

As the water swirls over a three hour period, 80% of sediment up to 100 microns in size spirals down and is trapped in a sump, which is removed simply by opening a valve and flushing out the sump, in all using only 15 litres of water. At the same time, the cleaned water spirals upwards through the unit and back into the pipe leading to a pool's main filter unit.

Used as a pre-filter and attached in-line between a standard pump and the main sand or cartridge water filter, the Multi Cyclone can be installed during the construction of a pool or retro-fitted.

Enhancing the Green Effect

An enhanced version of the 'Roll Energy - Evolution' pool cover system, with the option of a 24-volt electric motor or a solar powered unit within the roller, has been added to the DEL range of slatted pool covers available from Golden Coast.

The DEL range now supports a number of solar powered units to enable pools owners to reduce their carbon footprint at the same time as saving on energy costs. Leading the solar-powered 'green movement' are the 'Roll Sun' and 'Roll Sunny' systems.

Totally self-sufficient and environmentally-friendly, both use NASA light-sensitive 'photovoltaic' cell technology that converts light into electricity, even on a cloudy day. This is then stored in a highly-efficient rechargeable battery unit incorporated within a compact roller end stand.

The 'Roll Sun' cover system incorporates stain-resistant PVC individual slats, available in a choice of three colours that can be made to fit exactly the dimensions of any pool up to six metres wide by 13 metres long, with either a Roman or square step unit. Variable 'end caps' allow up to 15mm variant to be accommodated on a pool's width, which trap air within the slats chamber to provide high insulation and excellent floatation properties.

Used in conjunction with optional locking clamps, the cover once extended, can be 'locked' into position to improve safety for children under five, meeting the French European specification for mandatory pool covers. Powered by a 24-volt motor, the battery allows for the average cover to be opened and closed consecutively up to 30 times without the need for a recharge.

Using the same solar-power technology, the 'Roll Sunny' uses aluminium telescopic roller tubes designed to carry a bubble cover on pools of up to six metres wide and 13 metres long. It is powered by a 12-volt motor that will operate up to 15 times before needing a complete recharge.

A range of covers is available, from stain-resistant 'rigid' PVC slatted systems that traps air within the chamber of each slat to provide high insulation and excellent floatation properties, to light-weight woven and bubble thermal covers, all of which can be made to fit the dimensions of any pool of up to six metres wide by 13 metres long, with either a Roman or square step unit.

With professional installation being completed within hours, all the systems can be retro-fitted and are easy to operate, each having automatic switches to ensure that the roller is accurately rolled on and off the pool every time.

In addition to the solar systems, Golden Coast can also offer DEL mains powered units including:

Roll-In – that can be concealed at one end of a pool with the 24v motor in an external covered pit;

Roll-Top – an above-ground 24-volt motorised roller system;

Roll-Banc and **Roll-Over** – each of which provides a bench type cover over the roller mechanism and 24-volt motor.

Pumping It Up At Home

Turning an existing home swimming pool into an exercise pool for serious swimming or to create a 'fun environment' for children by adding movement to the water is possible with the Badu Swim-Jet system, available in the UK from Golden Coast.

The Badu 'Swing Spot' is an over-the-wall retro-fitted counter-current system that creates a powerful current for endurance swimming for the athletically active. The self-contained unit has an adjustable jet-propulsion system that pumps up to 5000 gallons per minute, allowing the swimmer to select the speed best suited to their ability.

Equally, it can be used to create water movement to add fun when children are using the pool, whilst there is an attachable massage hose which can provide pulsating jets of water to ease aching muscles and joints.

Manufactured from a one-piece moulded heavy-duty polyethylene plastic body that is affixed to the pool surround, the system has an anti-entrapment intake suction pump and is not affected by chemicals. Supplied complete with its own control panel, cable and mountings, the system is easy and ready to install by a qualified electrician.

For those planning a swimming pool, there is the flush-mounted Badu 'Smart' swim-jet system, which can be built into the wall of any type of in-ground pool offering the same advantages as its retro-fit partner.

With both systems, water is pumped into the pool through one or two large recessed jet nozzles mounted in an underwater housing, which can be adjusted to provide resistance for an enjoyable, therapeutic walk, jog or swim.

Illuminating finishing touch to creative pool lighting

Since their exclusive introduction into the UK by Golden Coast last year, more than 200 Nexxus SaVi Notes units have now been supplied by Golden Coast for a variety of lighting installations, including swimming pools, spas and water features making them one of the most popular creative lighting systems available.

Now the SaVi Notes LED lights have been enhanced, with a simple 316 stainless steel escutcheon to provide a high quality finish between the light fitting and the surrounding tiling. Easy to install, the lights fit directly into standard pool fittings as shallow as 9" below water level and are ideal for retro-fitting during pool refurbishment.

The lights are ideal for all types of pools, producing a variety of colour lighting effects either for general illumination or to create colour themed 'mood lighting', giving the pool water a single colour wash or an ever-changing combination as the system scrolls through different colour sequences.

Each set is operated through a central control unit powering four individual lights, with either 100 or 150 foot cable lengths. Multiple illuminations can be achieved by 'piggy backing' additional units together to create a multiplicity of colour effects.

Enhance the outdoor living experience

The pre-Easter warm spring weather had pool and spa owners looking forward to a long hot summer, in stark contrast to those of the last two years. To maximise the enjoyment of outdoor living, a variety of accessories – from single and double hammocks to unbreakable drinks ware - have been added to the Essentials 2009 range from Golden Coast.

To overcome the need to have china and glass outside, especially with children or around pools and spas where bare feet are the norm, Essentials has a full range of table and drinks ware that meet every requirement, including a cocktail shaker and martini style glasses, to wine, tumbler and beer 'glasses'.

To keep cool there is a nine foot diameter versatile spa-side umbrella, a great alternative to the traditional gazebo. Its 'crank and tilt' operation makes it easy to use, whilst its ability to rotate a full 360° provides total protection from the elements whatever the time of day.

If a pool or spa doesn't have internal lighting, it is still possible to create an amazing underwater show, especially with the 'Light Starship' and its ten different lighting effects and internal rotor that transforms the water into a galaxy of coloured light. A retro-fit solar light that can also be fitted onto the side of the spa provides a warm inviting glow, whilst ensuring safe access at night.

For hot tub owners there's more, the 'coolest' duck and the most versatile and easy to operate spa cover lifters, as well as a nifty step with storage and complementary handrail.

New this year is the entry-level quick and easy to install 'Cover Mate I' cover lifter, which is suitable for spas up to eight feet, yet only requires 10 inches clearance for storage behind the spa. Likewise, the ingenious 'Cover Rock-It', which is secured by a plate slipped under the spa, combines ease of use with affordability. When operated the cover slides effortlessly behind the spa enabling a view from all sides.

Three new spa safety steps colours have been added – light grey, redwood and brown to coordinate with the variety of external spa walls. The new SmartStep features a single 36" wide step making it ideal for partially recessed spas and comes supplied complete with a handy pull out storage drawer.

Complementing the steps and adding safety when entering or leaving a spa is a 'free-mount' handrail that sits under the spa and features a 180° swivel for easy entry and exit, yet locks for increased safety.

To enhance the spa experience, the practical 'SPAroma' range offers a blend of 12 natural hypoallergenic therapeutic fragrances that not only provide a long lasting fragrance but help reduce water maintenance.

But it's not all for the adults, children are catered for with a range of water-based games and toys that add fun and enjoyment to the bathing experience.

On the practical side, a full range of water treatment and testing kits, along with cleaning products ensure that a pool or hot tub is kept in tip-top condition throughout the year.

E-Suite Adds Vision To Marquis Spas

Following the results of market research that identified two distinct age groups - those between 25 and 40 and those above and up to 60 years old - who buy domestic hot tubs, Marquis Spas has added a number of options to its 2009 range to meet the requirements of all potential customers.

The same research also identified three motivational reasons to own a hot tub – health benefits, connection with family and friends, and escape from the stresses of the day.

Whilst retaining the philosophy that hot tub bathing is all about the therapeutic benefits, the 2009 range has evolved to meet the demands of those looking not only for the health aspect of the product but also for added value enhancements, such as sound, light and entertainment.

To achieve this, Marquis has upgraded its products by fitting as standard integrated cushioned headrests and a therapeutic cascading waterfall throughout the range, with multi-level seating, including a cool-down seat in the larger models, to ensure that every bather benefits. A new generous 'organic' foot well - modelled on the actual rock formation of a riverbed – massages the soles of the feet and accommodates longer legs.

Those wanting entertainment as they relax now have the choice of stereo sound, a video screen and multi-coloured underwater lighting if required. The Adagio™ audio system and 'one-touch' pop-up directional-sound 'rotating speakers' introduced last year have been joined by the 'E-Suite'™ - a water resistant video monitor that is stored in and lifts up from a heated corner of the spa to prevent the screen from misting up.

Automatic changing coloured LED lights, both underwater within the hot tub and on each of the exterior panels, provide mood lighting that bathes the water with colour, whilst externally creating an ambient glow around the unit.

Inside the spa the water jetting system has been improved with the 'Tri-Zone Hydrotherapy'™ and 'PowerShift'™ jets delivering three levels of relief to the upper, middle and lower body, including massaging aching feet, all available from each single seat.

To ensure the water temperature is maintained throughout the spa and the bathing period, filtered water is drawn into the primary pumps and simultaneously routed through a high-flow heating system ahead of the jet systems.

On the functional side the water filtering system has been enhanced with vortex skimmers removing surface contaminants. For primary filtration, water is drawn from specially designed safety suction fittings in the foot well and forced upward through the filter to trap debris, ensuring that all the water, from surface to floor, is recycled and filtered 60 to 160 times a day depending on the spa model.

Linked to the Marquis patented 'ConstantClean™' water management system, which sanitises the water using natural mineral and bromine in-line cartridges, is 'SmartClean™', a software-controlled cleaning cycle that is triggered automatically after each use of the spa. To keep running cost to a minimum, the main water filtration systems can be programmed to run only during off-peak periods.

To further reduce owners' energy costs, Marquis fills the spa cabinet with non ozone-depleting solid foam insulation that does not degrade. The foam, which adds strength and prevents heat loss through the spa wall and foot well, also insulates the plumbing and reduces vibration.

The new 2009 Marquis range is available from its exclusive UK distributor, Golden Coast.

Bringing together the best of all worlds

The shape of innovative sauna and steam for commercial or domestic use has been revealed by Golden Coast with the new 'Impression' range from Tylö.

Taking elements from its highly successful product ranges, Tylö has developed combination space-saving all-in-one sauna and steam cubicles, bringing together sauna and steam bathing, complete with an integral shower used as part of the bathing experience.

Available with single or twin benches, the 'Impression' steam cubicles incorporate a steam generator, overhead shower rose and a separate hand shower all contained within a single column. Its modular construction allows a variety of configurations to be achieved, including either a left or right hanging door to fit the chosen location.

The 'Impression' sauna also incorporates a separate sauna and the same shower functions in one unit, with an inner wall and door creating a division between the sauna and shower areas. The sauna can be configured with either two individual benches or a single stepped bench.

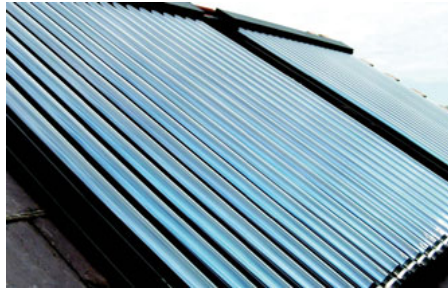
The new combination cubicles take up little more floor space than an average shower cubicle and initially offer three exterior finishes, white, black or wood. They will join the current range of domestic and commercial sauna cabins and steam rooms available from Tylö, including the design-led 'Round Vision', with its full length smoke-tinted safety glazed wall panels and rounded bow-front to provide a sensation of space from within.

Ends

Attached Pictures



Swimmer Polymer Pool



'Sunburst' Solar System



Multi Cyclone Filter



'Roll Sun' Solar unit



'Roll Sunny' Solar Cover



SaVi Notes Lights



Badu 'Smart'



Badu 'Swing Spot'



Underwater 'Light Starship'



Tylö 'Round Vision'



Marquis Spa 'E-Suite'



Tylö 'Impression' Sauna



Tylö 'Impression' Mono